

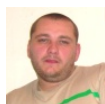
Authors

Patching SX1 (WHS, SXP and SXPR)

instructions



Gwin



Martin Kolka

Issued on: 17/05/2005

Average rating: 3.6 (rated 22x)

I know that Lukašisko already wrote about how to patch the SX1 (in the article how to remove sound when taking photos), but the questions of how and what are increasing. It won't be anything new for those who have already patched, but it will definitely be useful for newbies.



Using the procedures or programs listed below is not in accordance with the warranty conditions of the phone manufacturer. By using them, you run the risk of not recognizing the warranty on the device in the event of damage to it.



This instruction can, without perfect understanding of the procedure, lead to damage to your phone (even permanent). Before starting work, read it all thoroughly and if you have any ambiguities, consult them in advance on the designated [discussion forum](#) !



Make a backup of your SX1 data before starting any modifications.

What will we need:

Functional SX1 and DCA-540 cable

Firmware winswup for SX1



Patches for SX1



Apache



Winswup Memory Patcher



WinHex



USB cable driver



I deliberately did not write what the correct patch format is. Because there are currently three main types of patches and corresponding software. Patches with the extension whs, with the extension sxp and with the extension sxpr. I will not mention other types, they are not that widespread yet.

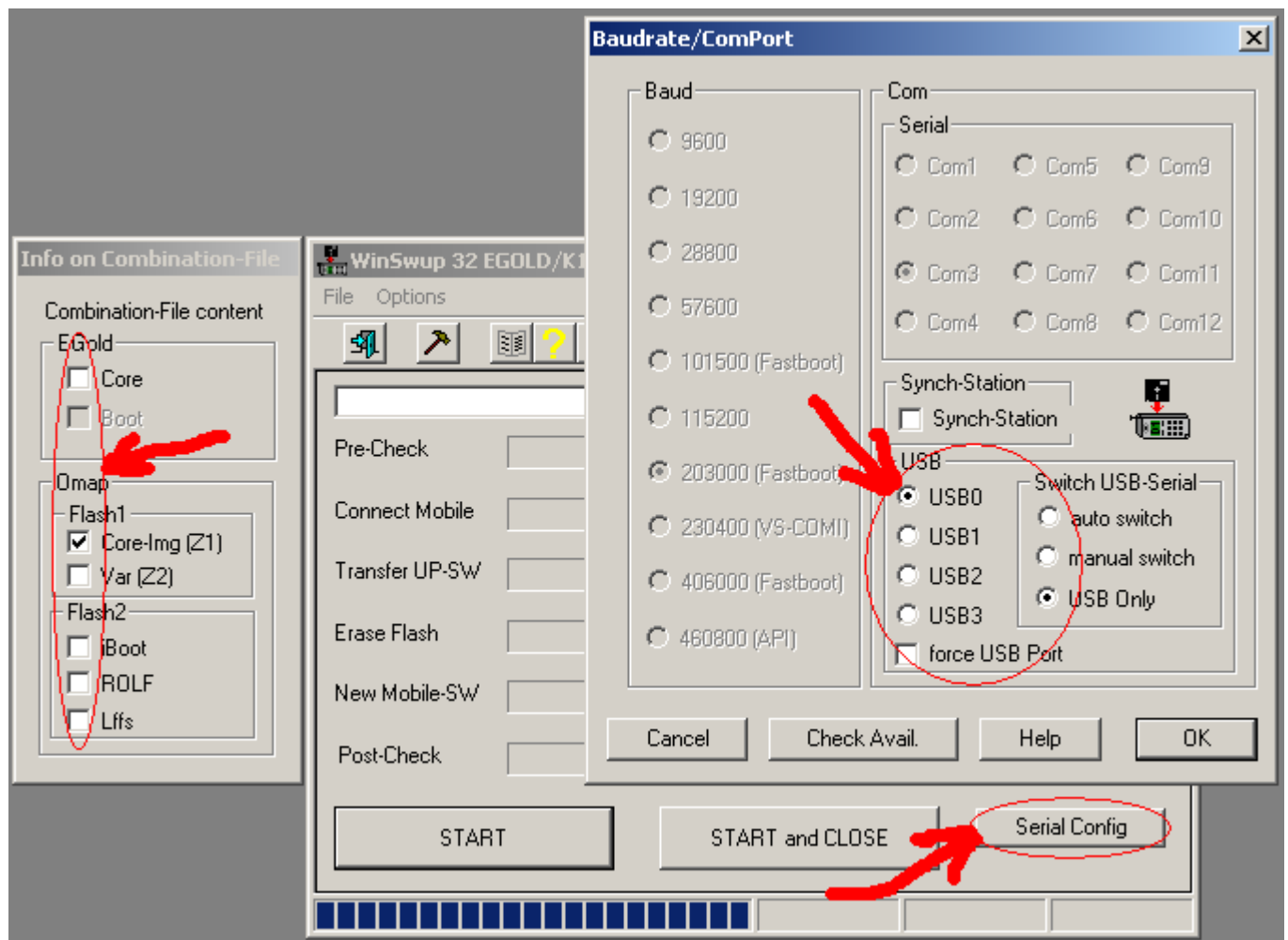
WHS is a script for the WinHex hexa editor, SXP is a patch for the WSMP program and SXPR is a patch for the Apatcher program. I will gradually explain the procedures for applying whs, sxp and sxpr patches. But first, general information about how patching works on the SX1 and what you have to follow. Patching on SX1 is different from patching of other Siemens. Since we cannot (hopefully for now) directly access the phone's memory (for example using V-Klay), we have to modify the firmware on the computer and upload the modified part of the firmware to the phone. I would also like to point out that if you had any patches on your phone before, you must apply them again, together with the one you have chosen now.

About those rules. The very first rule: **"Backup"** - contacts, sms and applications from drive C, probably nothing will happen to them, but chance is a fool. The second rule is to fully **charge the battery** before you start patching, it's not just a phrase, it really needs to be properly charged. The third rule is to study and properly **understand this manual** and clarify any ambiguities on the forum.

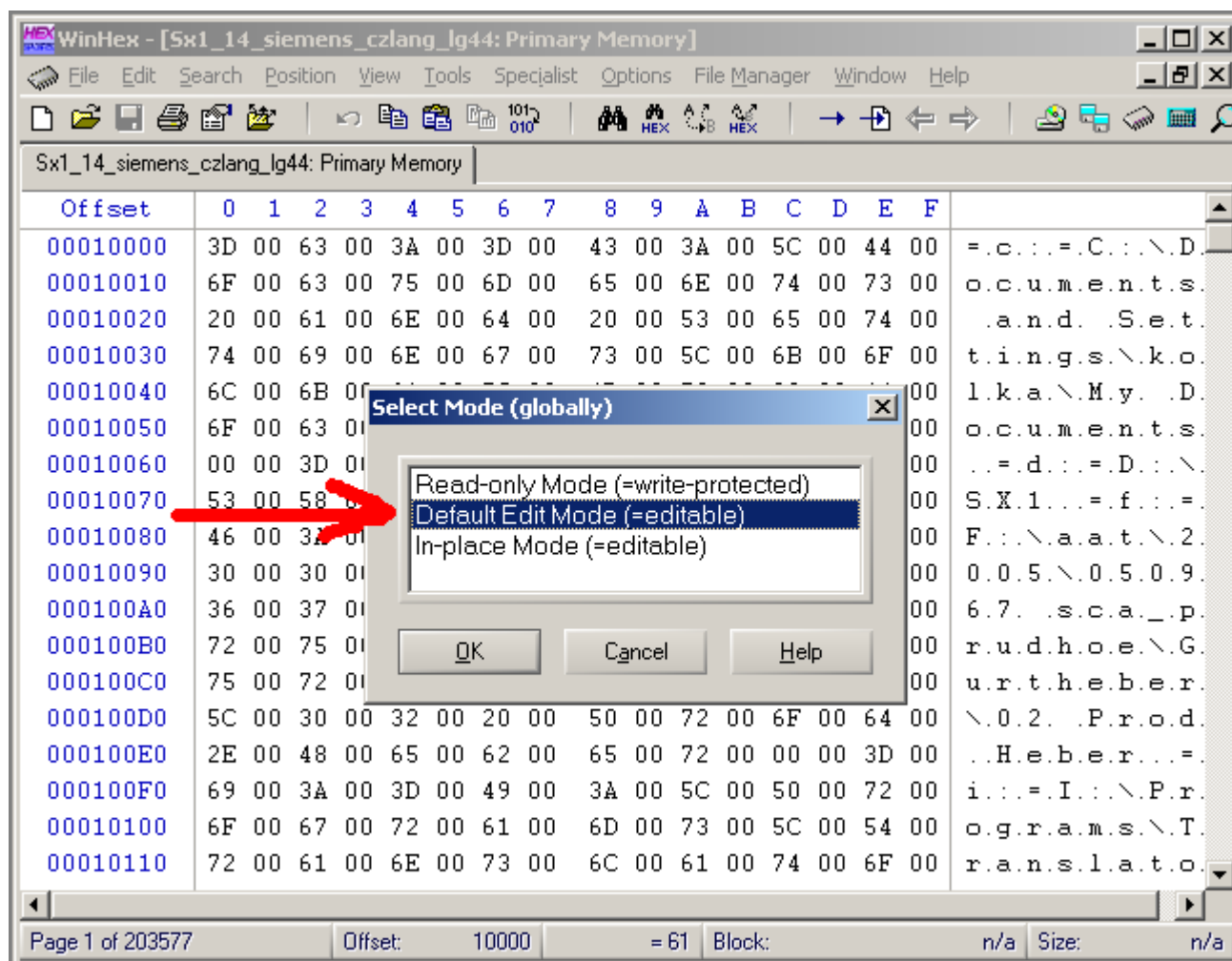
Even before we apply the patch, we read whether something is written in the patch, for example, that it is necessary to copy some files from disk Z to the MMC card. For copying, we will use any file manager that displays the Z drive (FExplorer, Smart Fileman, SeleQ).

So first, less popular for me, but having its advantages: WHS.

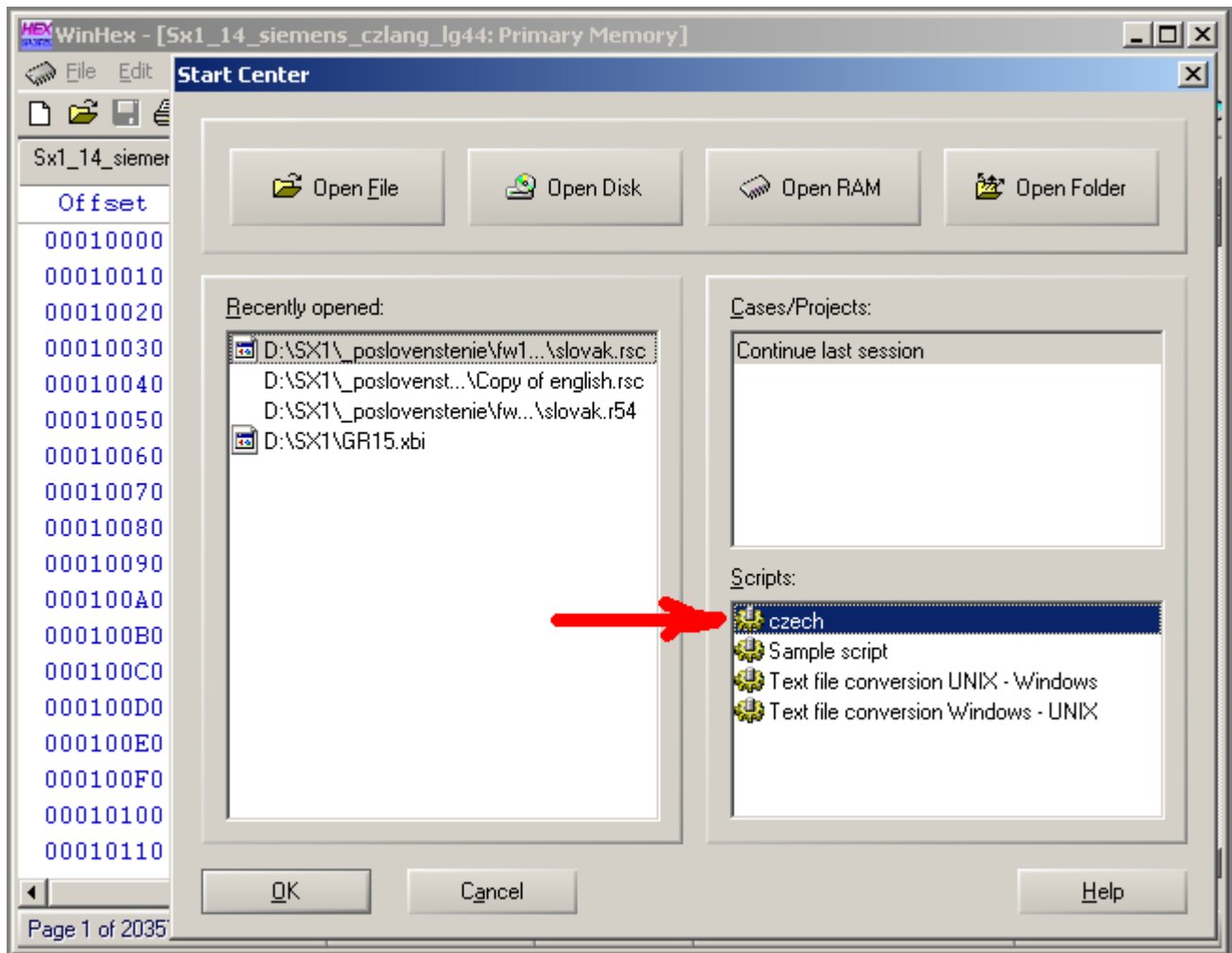
1. We download WinHex and the firmware we want to use and the corresponding patch with the whs extension. We will study the patch to see if it contains any instructions and, if necessary, execute them.
2. We copy the patch to the directory where we installed WinHex.
3. We start the winswup firmware, if we want to switch to another version of the firmware at the same time, we leave all the boxes in the left window checked. If you are not changing the firmware version, leave only Z1, Z2 or ROLF checked. In "Serial config" we set "USB only" and select the corresponding USB port".



4. Start WinHex and use Alt+F9 to open the process named "siemens" or "SX1". We select "Primary memory". Use F6 to change "edit mode" to "default edit mode", or "In-place mode".



5. Use the "Enter" key to call up the "Winhex Start Center".

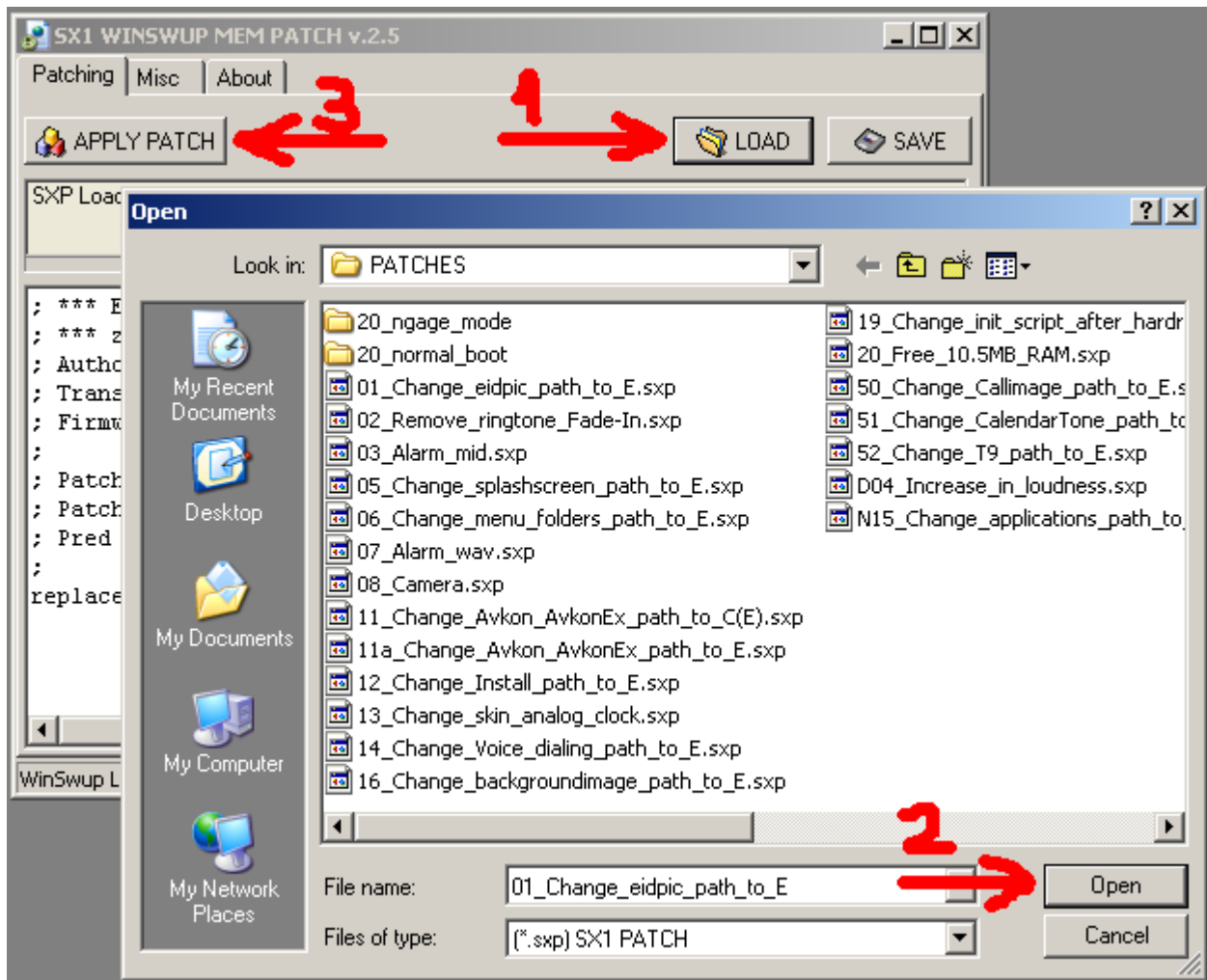


6. In the "Scripts" window, we select our patch and double-click to run it. After successful application, we will return to Winswup.

This is where the differences end, so now skip to point number 5 in the instructions for SXP.

And now my favorite SXP:

1. We download WSMP and the firmware we want to use and the corresponding patch with the sxp extension. We will study the patch to see if it contains any instructions and, if necessary, execute them.
2. Let's start the winswup firmware, if we want to switch to another version of the firmware at the same time, leave all the boxes in the left window checked. If you are not changing the firmware version, leave only Z1, Z2 or ROLF checked. In "Serial config" we set "USB only" and select the corresponding USB port.
3. Start WSMP and use the "Load" button to load the corresponding patch.



4. We apply it with the "Apply patch" button. "OK" should appear in the middle window. And now we return to Winswup.
5. We connect the switched-off phone with the MMC card selected to the cable. We start the phone by simultaneously pressing the joystick and the red button. It boots into swup mode. If necessary, install the appropriate drivers.
6. Winswup will start itself after a while and play the relevant part of the firmware on the phone.
7. After successful playback, "All done!" pops up in the Winswup window. We pull the phone out of the cable, insert the MMC card and start it.
8. Enjoying the new patch.

SXPX:

The sxpr patch is basically an extended sxp patch. Apatcher can park with both sxp and sxpr.

1. We download Apatcher and the firmware we want to use and the corresponding patch with the extension sxpr. We will study the patch to see if it contains any instructions and implement them if necessary.
2. **The name of the firmware must contain the string "Siemens"!** For example: Siemens_SX1_15_CZlang_lg44.exe.
3. We start the winswup firmware, if we want to switch to another firmware version at the same time, we leave all the boxes in the left window checked. If you are not changing the firmware version, leave only Z1, Z2 or ROLF checked. In "Serial config" we set "USB only" and select the corresponding USB port.
4. Start Apatcher and use the "Open" button to open the relevant patch.

 NUMÉRO COQUIN FRANÇAIS 

Appelle dès maintenant le



08 95 08 50 84

TÉLÉPHONE ROSE DES FEMMES COQUINES

SERVICE 0.80E/MN + PX APPEL

5. Apply the patch with the "Apply patch for RAM" button. After successful application, the message "ALL DONE!" should appear.

The procedure is otherwise the same, so go to point 5 in the SXP manual.

I hope I wrote it clearly enough, and even if not, we have a forum at Siemensmania.

No one may copy graphics, texts or anything else from these pages without the permission of the authors. All information published on this site is intended for educational purposes only and may not be used for commercial use or in violation of laws. The authors are not responsible for inappropriate use of data from these pages.

©2003-2004 Radim Zeman | ©2004 Roman Gregor